

SPECIFICATIONS

2 LANDING
500 LB. DUMBWAITER

CAR 36"X36"X48" H CODES 4, J
CAPACITY 500 LBS. AT 30 F.P.M.
1 CABLE 3/16" DIA. T.S. 30" FLOW
STEEL 1/4" X 8 X 19 1/2" VWC
CAR CONSTRUCTION STAINLESS STEEL
COLOR/PANEL SELECTION: N/A

- LIGHT IN CAR
- ADJUSTABLE SHELF
- COLLAPSEABLE GATE
- LIP IN CAR
- IN USE LIGHTS
- ARRIVAL LIGHTS
- KEY SWITCH OPERATION
- DUMBWAITER OPEN ALARM
- ARRIVAL BONG
- STEEL FLOOR
- STABILIZER
- FORMICA FLOOR

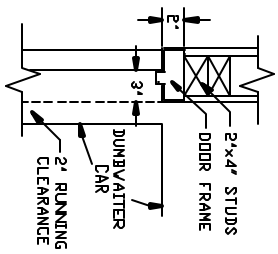
NOTICE TO ELECTRICAL CONTRACTOR:
BRING 4 #10 WIRES TO DISCONNECT SWITCH (2-110, 1-NEUTRAL, 1-GROUND, 1 1/2" H.P. MOTOR 220 VOLTS 1 PHASE 60 CYCLE
115 AMPS RUN 56 AMPS START
FUSE 15 AMP SLD BLD
30 AMP MAIN LINE FUSE
SWING TYPE SHAFT DOORS BY OTHERS

INCDA JOB #

DRAWN BY:
DATE:

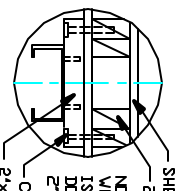
DRAWING IDENTIFICATION NUMBER

DW0400

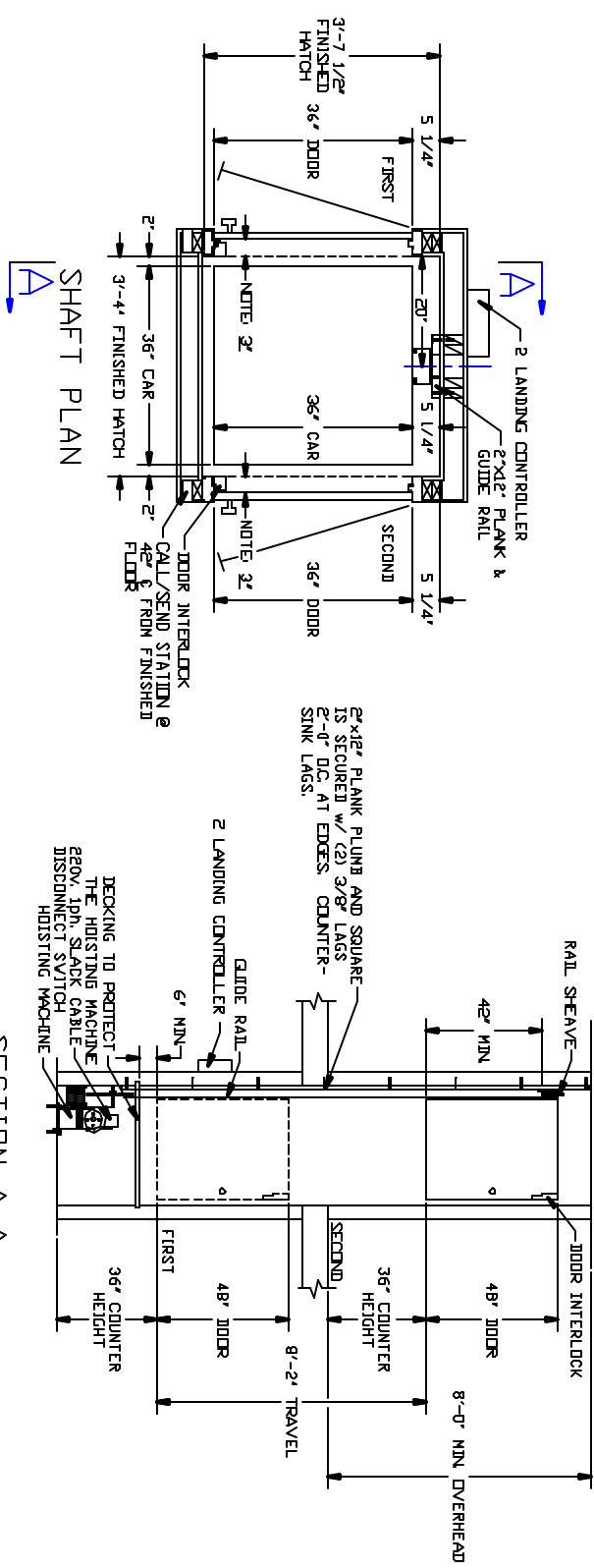


DOOR FRAME DETAIL

- TECHNICAL DATA**
- REACTIONS ON ALL SHEAVES AND MOUNTINGS
STATIC = 1100 LBS.
IMPACT = 2,200 LBS.
FASTENING OF HOISTING MACHINE TO CONCRETE
1/2" x 3" HLT BELTS (OR EQUAL)
RAIL FASTENING TO 2"x12" PLANK
#14 X 1 3/4" TYPE A SMS. RAIL IS PRE-DRILLED AT FACTORY.
BOLT FASTENING OF CAR TO TROLLEY
1/2" - 19 X 4" SOCKET HD CAP SCREWS



DETAIL "A"



SECTION A-A

Typical Not for Construction